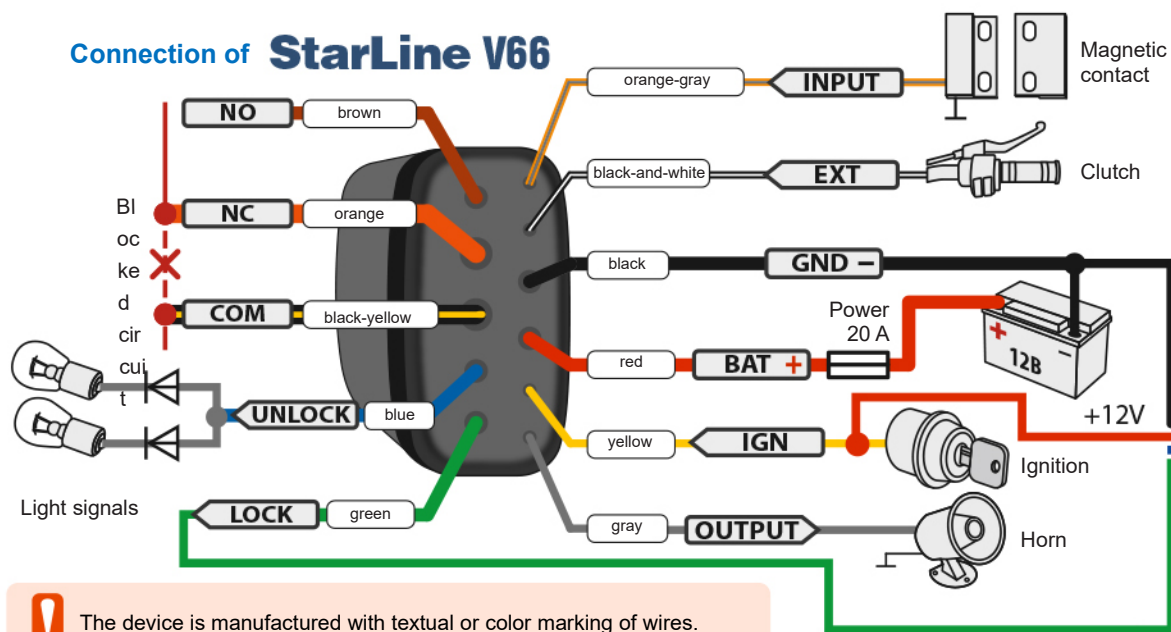


StarLine V67

Layout of connection of security-telematic complex for motor vehicles StarLine V67

Connection of StarLine V66



The security-telematic complex StarLine V67 protects against theft and traces position of motor vehicles.

StarLine V67 monitors the following security zones:

- ignition
- shock sensor
- tilt sensor
- movement sensor
- trunk
- battery terminal removal

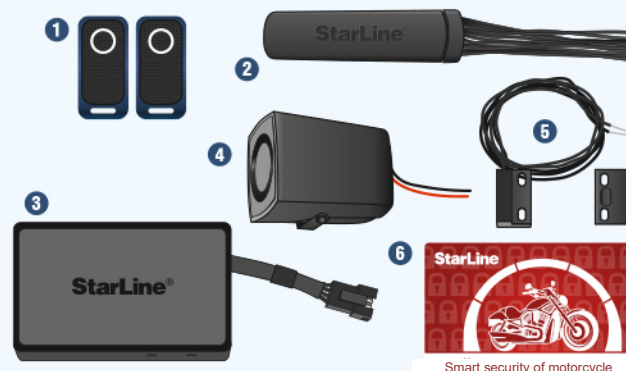
StarLine M17



The device is manufactured with textual or color marking of wires.

Delivery set

- 1 Wireless Bluetooth-tags
- 2 StarLine V66
- 3 StarLine M17
- 4 Horn3
- 5 Magnetic contact
- 6 Plastic card



Installation recommendations

Place StarLine V66 in a hidden hard-to-reach area, for instance, under the motor cycle fuel tank. Put the horn as far as possible from heat and moisture sources. Direct the horn downwards so as to avoid water accumulation.

Lay the wires as far as possible from electric interference sources: ignition coil, high-voltage wires etc. Wires shall not touch the moving parts of the motorcycle – pedals, moving parts of the steering gear etc. For correct operation of StarLine V66 bypass all the windings of additionally installed external relays using diodes.

Put StarLine M17 so that its cover (the side with StarLine logo) is towards the sky. At installation, the housing of StarLine M17 shall not be closed with metallic objects and coatings. The GLONASS/GPS satellite signals passes through glass, plastic, decorative trimming, but does not pass through the metallic body, metallized tint coating and other metallic objects.



Federal Support Service of StarLine.
Toll free

Russia	8-800-333-80-30
Ukraine	0-800-502-308
Kazakhstan	8-800-070-80-30
Belarus	8-10-8000-333-80-30



The developer and manufacturer, StarLine SPA, reserves the right to make technical improvements not shown in this diagram.

Information on updates, current versions of operation and installation instructions are available on the website www.starline.ru in section "Catalogue".



ATTENTION! Do not place StarLine M17 near hot parts. Bear it in mind that the beacon contains lithium batteries which may ignite at temperatures above +60 °C.

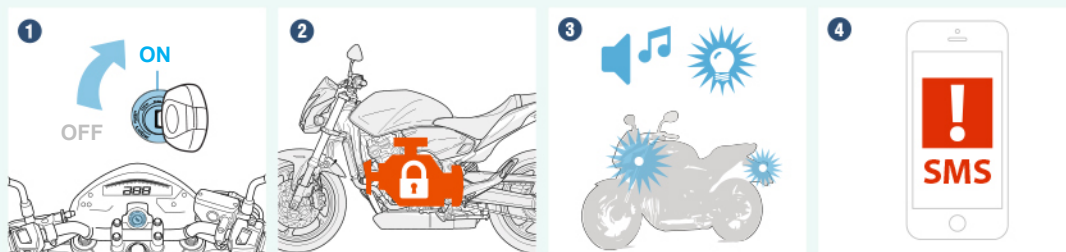
Quick setting

- 1) Press the button on the housing of StarLine M17 and make sure there is a series of short LED flashes
- 2) Send the following SMS-commands:

Command	Example of SMS	Example of response
Setting owner number	1234+	Owner's telephone: +7XXXXXXXXXX
Setting internal clock	1234 T 12:23 15.01.2016 +4	Date and time: 12:23 15.01.2016 (+4)
Password change	1234 P5678	New password: 5678

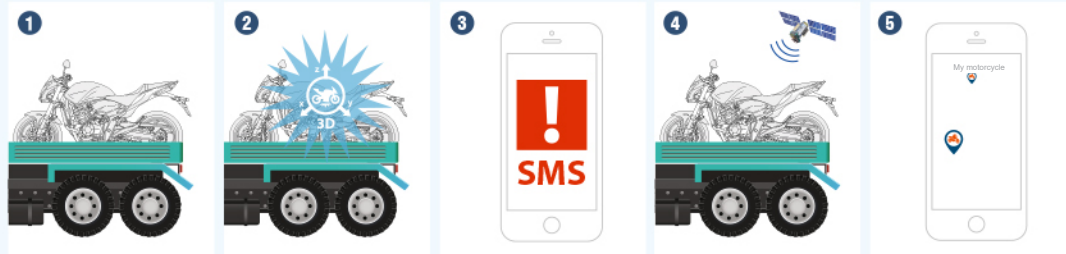
Scenario of theft protection

When ignition is activated in the security mode, the engine will be blocked, the horn and turn lights be activated. The motorcycle cannot be driven. The owner will receive a warning SMS on motorcycle theft attempt.



Scenario of protection against theft in a truck

In case of motorcycle theft and attempt to drive it away, the movement sensor will actuate and monitoring will be switched on. The owner will receive a warning SMS and will be able to trace motorcycle movement on the map. In this operation mode the batteries will operate for 8 hours of monitoring.



Recommendations at motorcycle preservation

- At deactivation of the motorcycle storage battery for a long time (e.g., winter period), to save the beacon battery charge, send the SMS-command "1234 IN-- N M-".
- Before subsequent motorcycle operation, send the SMS-command "1234 IN+- A M+".

Smartphone authorization

To use an iOS smartphone as a tag, download the **StarLine Moto** application for free and register the smartphone in StarLine V67



Available on the iPhone
App Store



Smartphone monitoring

To trace location, download the **StarLine** application for free



Available on the iPhone
App Store



Google play



Windows Phone