

TRACKER CONFIGURATION

Register the owner tel. number (M1) in tracker memory to be able control the tracker and receive notifications. Commands from M1 number are sent without GSM-password. To send commands from other numbers need to add GSM-password in beginning of SMS command text (for example, to request vehicle positioning send following SMS - command: **1234 40**, where **1234** – GSM -password, **40** – command code).

Use following SMS-command to register M1 telephone number and GSM-password: **XXXX M1 YYYY TEL**, where **XXXX** – service code, specified in the personal plastic card, **YYYY** – your GSM-password, **TEL** – M1 owner telephone number in international format.

GSM commands list

SMS command text	Command description
40	Location request
GPS	
XXX	SIM-card balance request, where XXX – operator USSD command code
45	Request for location and GSM+GPRS signal quality
BALANCE	
MONEY	
06	GSM-password request
GSMPSW?	
07	Request for the registered telephone numbers
TEL	
PHONES	
09	Request for GSM signal quality and firmware version
INFO	
0000XXXX	Record new guest GSM - password, where XXXX - new password
0000 XXXX	
GSMPSWXXXX	
GSMPSW XXXX	
00011XXX	Record new M1 tel. number, where XXX – new tel. number in international format +12345978910. M1 owner tel. number cannot be deleted.
00011 XXX	
M111XXX	
M111XXX	

SMS-команда	Описание
9900PIN1XXX	Emergency M1 tel. number changing:
9900 PIN 1 XXX	PIN – emergency disarm code (from guest tel. numbers the GSM-password should be added before)
WM1PIN1XXX	XXX – new tel. number. Tel. number in international format should begin with "+", then country code and local number of at least 5 digits. This command can be sent from any tel. number.
00961	Require for GSM-password from M1
M1PSW+	
00960	Do not require for GSM-password from M1
M1PSW-	
00550	Disable GPRS
GPRS-	
00551	Enable GPRS
GPRS+	
GPRS?	GPRS status request
00520	Disable SMS-alert on switch to roaming
00521	Enable SMS-alert on switch to roaming
00522	Enable SMS-alert on switch to roaming with automatic GPRS disabling
00523	Enable GPRS in roaming
00524	Disable GPRS in roaming
APN NAME LOGIN PSW	Record Internet access APN for active SIM-card, where: NAME - APN address, mandatory parameter (for example, internet.mts.ru) LOGIN PSW – login and password for access, not mandatory parameters (for example, mts mts) If no any parameter is specified, so APN settings will be erased

StarLine® M18, M18PRO



GENERAL DESCRIPTION

StarLine M18 tracking device allows to determine an object location with GPS and GLONASS global satellite navigation systems.

Device can be fitted in a car, boat or a cargo.

Real time tracking is available at starline.online free web service and in StarLine mobile App. Use preregistered individual login and password specified in personal plastic card to a personal account access.

Login

Emergency disarm code

Password

Service (Valet) code

Login and password for access to starline.online private account

Tracker will send SMS message with a web-link to an object coordinates on request from an owner.

HOUSING LED INDICATION

After power activation the LED on the tracker housing is continuously lighting withing one hour, then begins flashing once per 10 sec.

Light color	Interpretation
green	connection with server established, GPS+GLONASS coordinates determined
red	power is On, no connection with server
blue	connection with server established, GPS+GLONASS coordinates not determined
violet	device is connected to computer with StarLine Master program loaded

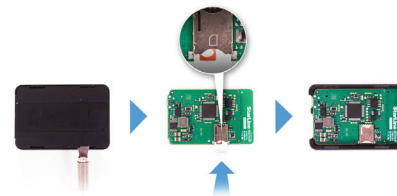
TECHNICAL FEATURES

Parameters	Values
GSM band	2G 850 900 1800 1900 MHz
SIM card slot	1 NanoSIM
GSM antenna	embedded
GPS GLONASS receiver	embedded
Interfaces	1 microUSB
GPS GLONASS receiver sensitivity	• -148dBm — “cool” start • -163dBm — “hot” start • -165dBm — in tracking mode
Power supply	8 – 32 V
Working temperature range	-40 ... +85 °C
Main unit dimensions	64x44x13,5 mm
Weight	33 gr

TRACKER CONNECTION

SIM-card installation

Open the device box with metal thing and insert SIM-card in the slot on circuit board.
Put the board and cover back.



Fitting recommendations

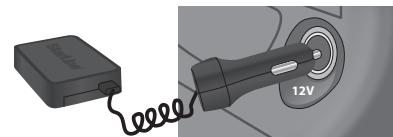
Place the tracker so that it's lid with StarLine logo is directed towards the sky. Device should not be shielded with metal parts and materials.



GPS+GLONASS signal can penetrate glass, plastics, dashboard and doors decoration, but can not go through metal body parts, metal tint films and other metal surfaces.

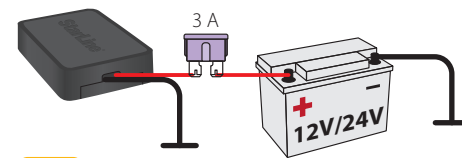
StarLine M18 connection diagram

Connect tracker to the lighter socket with adapter.



 The power is not supplied with USB connection to computer.

StarLine M18 Pro connection diagram



Apply to a qualified fitter for this way of installation.

MONITORING

Real time object tracking is available at starline.online free web platform or in free StarLine mobile application.

Tracker has 3 monitoring modes:

- **tracking by motion sensor**
In this mode tracking of object begins with moving.
- **continuous tracking (default)**
In this mode an object location is permanently monitored.
- **tracking at every 30 min**

In this mode tracker activates GPS+GLONASS receiver every 30 min. If satellites are not found, the receiver will be disabled after 5 min.



The monitoring mode can be selected in StarLine Master software.