



# StarLine® M17/M15

INSTALLATION  
MANUAL



Thank you for choosing  
StarLine M17/M15 GLONASS/GPS.

Read these instructions carefully  
before installation

You can learn more about  
StarLine M17/M15 GLONASS/GPS at

**[www.mayak.mobi](http://www.mayak.mobi)**  
**[www.starline.online](http://www.starline.online)**

StarLine wishes you  
a safe and pleasant journey!

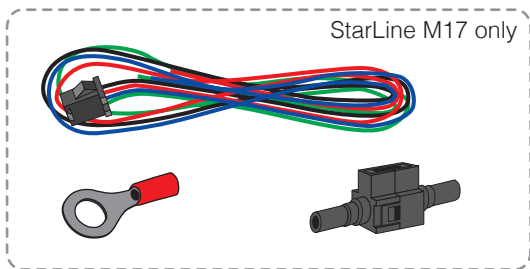
1

StarLine M17 / M15

StarLine M17 only



StarLine M17 only



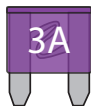
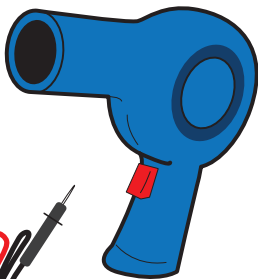
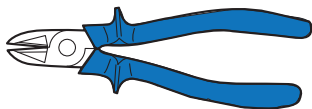
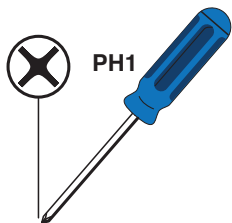
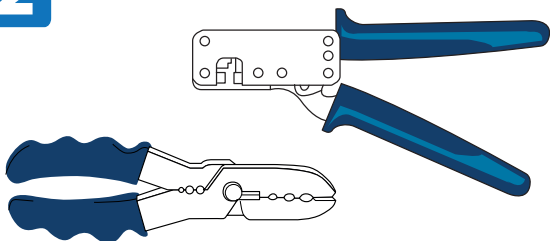
**StarLine**

**WARRANTY CARD**

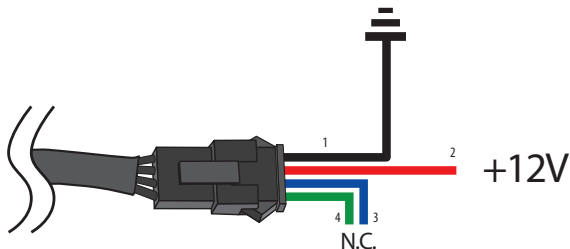
**StarLine**  
**M17/M15**  
INSTALLATION  
MANUAL



2

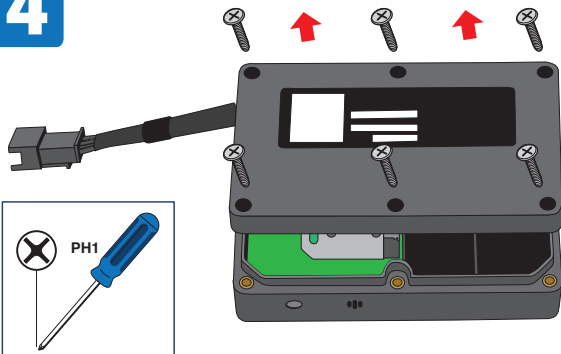


# 3

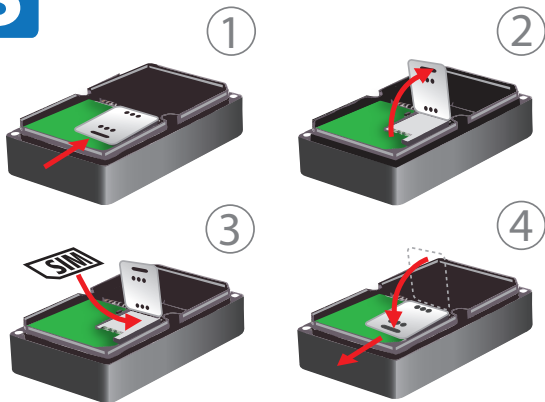


1	SCHWARZ	BLACK	NOIR	ZWART	ŠORT	SVART	SVART	MUSTA	NERO
	NEGRO	PRETO	МАЃРЃ	ŠERNÁ	CZARNY	SIYAH	FEKETE	CRNO	ЧЕРНО
	NEGRU	ЧЕРНЫЙ	JUODA	MELNS	MUST	ŠRNA	ŠIERNÁ		
2	ROT	RED	ROUGE	ROOD	RÖD	RÖD	RÖD	PUNAINEN	ROSSO
	ROJO	VERMELHO	KOKKINŃ	ŠERVENÁ	CZERWONY	KIRMIZI	PIROS	CRVENO	ЧЕРВЕНО
	ROSU	КРАСНЫЙ	RAUDONA	SARKANS	PUNANE	RDEŠA	ŠERVENÁ		
3	BLAU	DARK BLUE	BLEU	DONKERBLAUW	BLÁ	BLÁ	BLÁ	UMMANSININEN	BLU
	AZUL MARINO	AZUL MARINHO	MPLÉ	MODRÁ	RANATOWY	KOYU MAVI	KÉK	PLAVO	СИНО ТЫМНО
	ALBASTRU	СИНИЙ	MÁLYNA	ZILS	SININE	PLAVA	MODRÁ		
4	GRÜN	GREEN	VERT	GROEN	GRÖN	GRÖNN	GRÖN	VIHREÁ	VERDE
	VERDE	VERDE	PRASINO	ZELENÁ	ZIELONY	YESIL	ZöLD	ZELENO	ЗЕЛЕНО
	VERDE	ЗЕЛЕНый	ĀLIA	ZÁπ	ROHELINE	ZELENA	ZELENÁ		

# 4

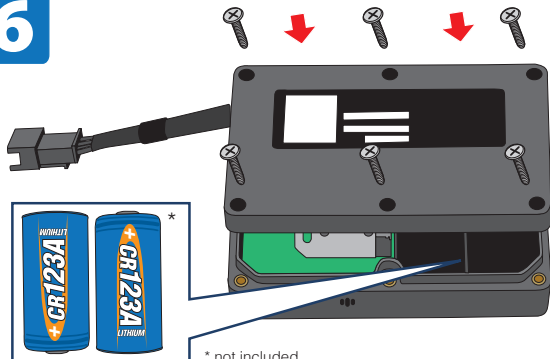


# 5



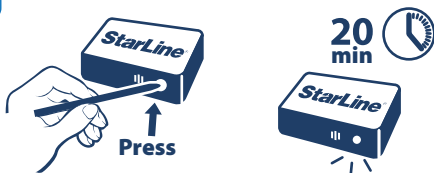
Before installation or removing a SIM card, make sure that the device is fully de-energized. The batteries must be removed before SIM card replacement.

# 6



# 7

## TURN DEVICE ON



# 8

## SET THE OWNER'S NUMBER



Send SMS from owner's mobile phone

1234 +

Receive SMS with owner's number

Owner's mobile phone (example):  
+39340009700



# 9

## CHANGE PASSWORD

We recommend you to change the default password to avoid the device control by unauthorized persons. The factory default password: 1234.



Send SMS with text from owner's mobile phone

**1234 P 5678**

where last 4 numbers are a new password

Receive new password confirmation

**New password: 5678**



# 10

## ENABLING MONITORING

Further information is related only to M17.

For real-time vehicle monitoring, register the device at **[www.starline-online.ru](http://www.starline-online.ru)**



Send SMS from owner's mobile phone

**MON +**

Receive activation confirmation

**Activating monitoring**

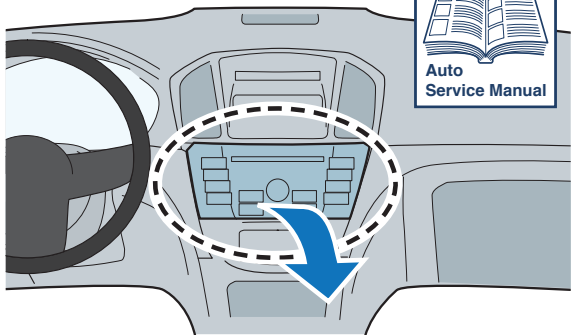
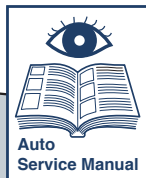
Receive enabling confirmation

**Monitoring activated**

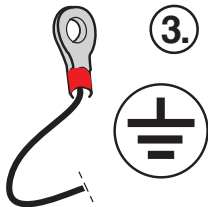
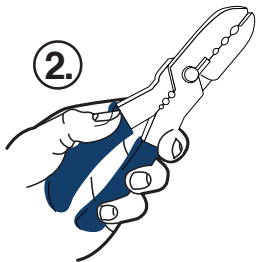
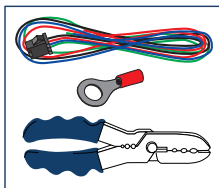
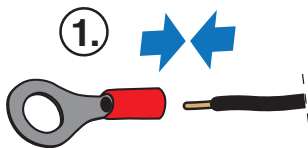




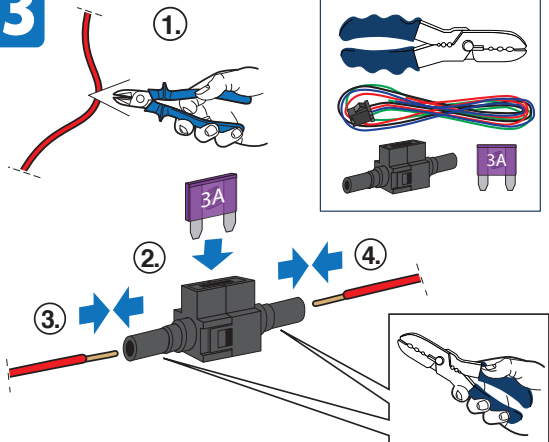
# 11



# 12



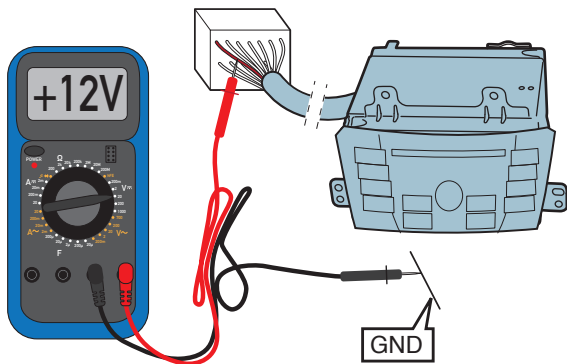
# 13



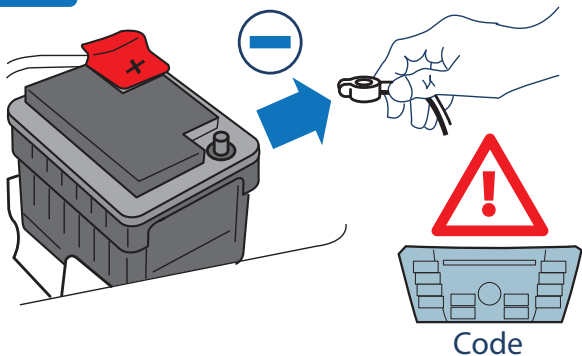
# 14



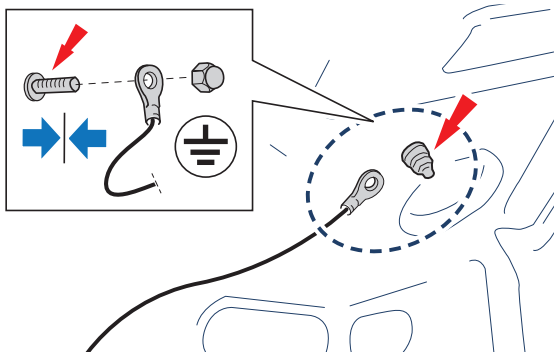
IGNITION - Off  
ILLUMINATION - Off



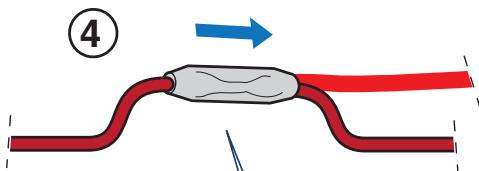
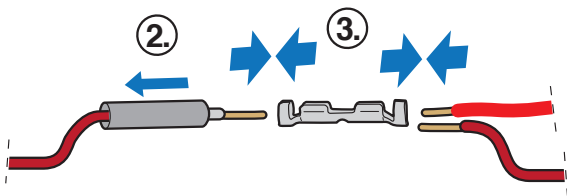
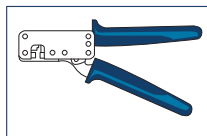
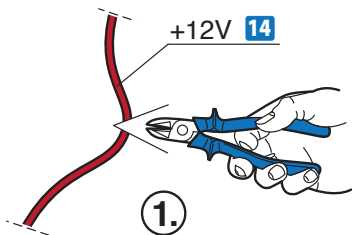
15



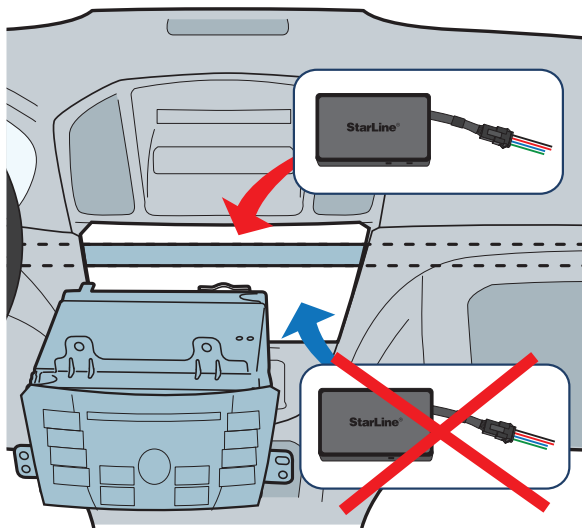
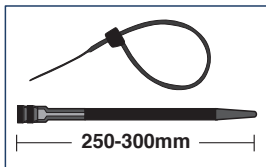
16



# 17

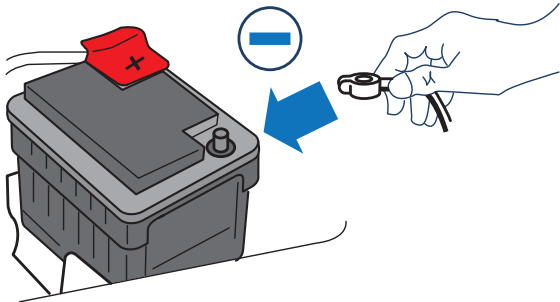


# 18

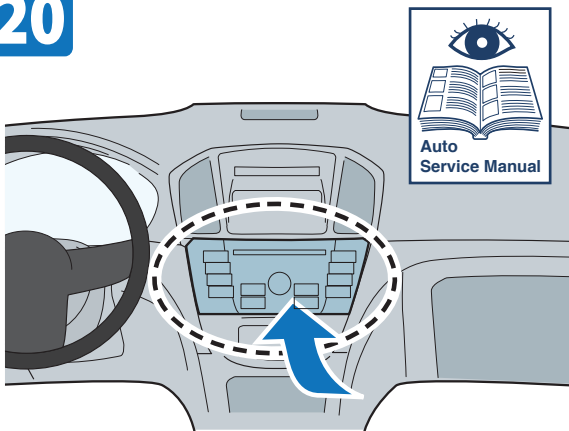


The device must be installed with the label facing up so that the internal antennas have access to RF signals. Do not place the device directly underneath a metal panel or a metal covering as this will affect GPS and GSM performance.

19



20



## SPECIFICATION

<b>Parameter</b>	<b>Value</b>
Communication standard	GSM 900/1800
Embodiment of GSM and GPS antennas	built-in
Model of the GPS/GLONASS receiver	MTK3333
Supported GNSS	GLONASS/GPS
Accuracy of calculation of the GPS/GLONASS coordinates	
typically	from 5 to 10 meters
in conditions of the weak-signal reception	up to 500 meters
Accuracy of location determination by the LBS GSM technology	
in the town	from 100 to 800 meters
out of the town	from 0.5 to 30 km
Battery	2 x CR123A Primary Lithium Batteries
Capacity of the CR123A plug-in lithium batteries	2 x 1.5 A-h
Battery life	up to 2 years
Maximum load current	200 mA
Operating voltage for external power supply (M17 only)	from 8 to 33 V
Operating temperature range	from -40 to +60°C
Physical dimensions	85 x 52 x 23 mm
Weight	110 g

**StarLine®**

[www.alarmstarline.com](http://www.alarmstarline.com)

[www.starline.online](http://www.starline.online)

[www.mayak.mobi](http://www.mayak.mobi)